

ResNet allows you to access the internet and email from your room. This guide is the first stage to be completed if you wish to connect your laptop or desktop pc to the student network. Once connected to the network you will have restricted privileges within "Quarantine" which will allow you to update your PC. Once you have completed all the updates and installed any necessary pieces of software you will then automatically be switched to full internet access

## Checking you have a Wireless Network Card

1. To connect Wirelessly to the Network you need to have a wireless card installed in your machine. You can check this by looking at your taskbar where you should see a icon similar Fig 1. Alternatively go to Control Panel > Network Connections and in here you should see an icon for Wireless—see Fig 1.1

Fig 1



Fig 1.1

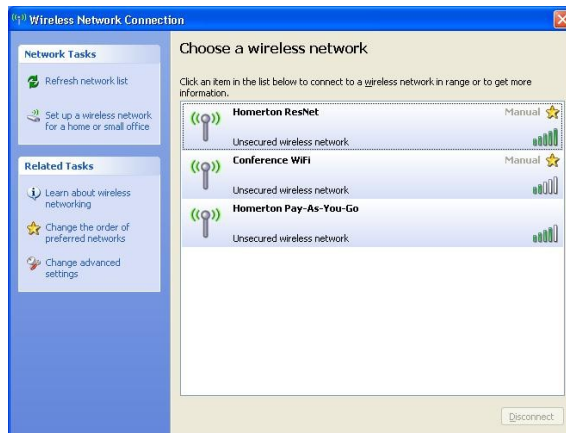


## Connecting to the Wireless Network.

2. Double click on either of these icons and you will then see a screen with a list of available wireless networks The one you require is **Homerton ResNet**.

If this does not appear in the list of available networks click Refresh Network List.

Fig 2



3. Double Click on Homerton ResNet now and a message box will appear as below. Click on "Connect Anyway" to connect to the network.

Fig 3



Your computer will now connect to the Wireless Residential Network. You will know when you have done this as a pop up box will appear in the bottom right of your screen stating so.

Fig 4

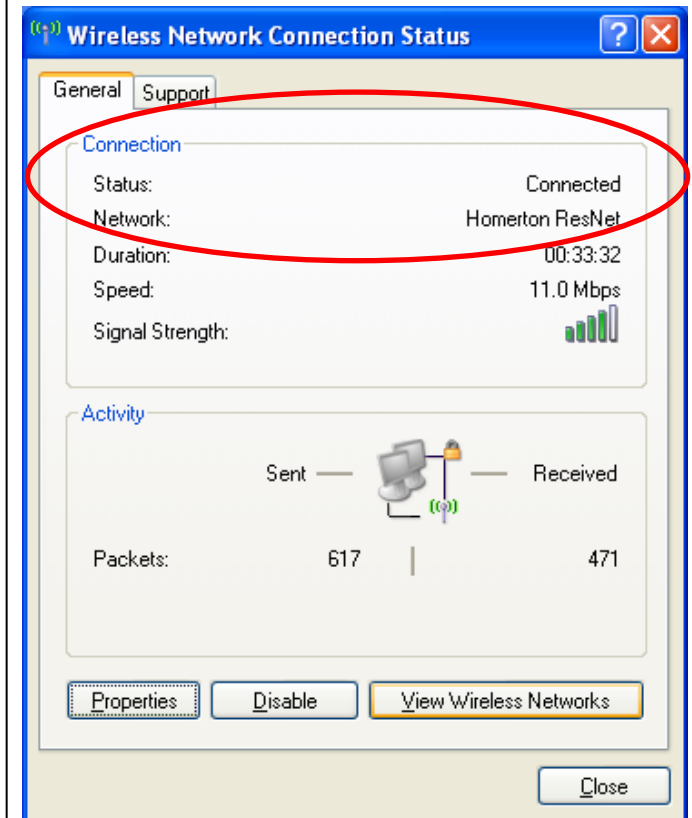


## Checking you are connected to the Wireless Network.

You can check that you are definitely connected to the Homerton Wireless Residential Network in a number of ways.

One way is to double click on the Wireless Icon in your taskbar. (Bottom right near the clock). This will then bring up the Wireless Network Connection Status Box.

At the top of this box in the Connection area this tells you if your wireless connection is connected to a network and which one it is connected to.



Alternatively you can double click on the Wireless network Connection icon in Control Panel > Network Connections as previously and this will also display the above screen.

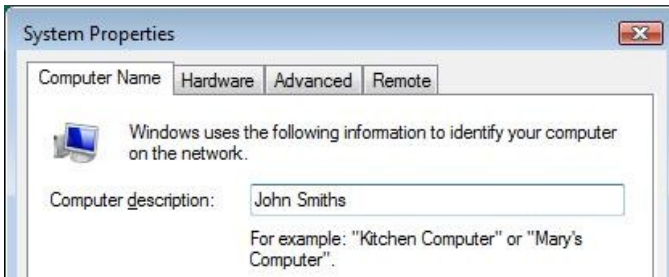


### What is a CRSID ?

It is the login ID you received on your registration day and the first part of your email address. Eg TW123  
You will not be able to connect to the internet in your room until your Registration day has passed.

### Changing Network Identification

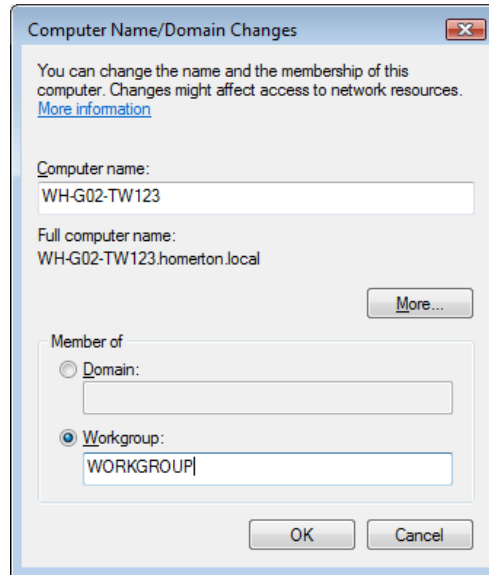
4. Click **Start, Settings, Control Panel**, (you may need to select **Switch to Classic View**) **System**, and select **Computer Name** Tab. Change the computer description field to be your Name.



5. Click **Change** from within the same **Computer Name** Tab window. Change the Computer name to be your **building, room number and CRSID**

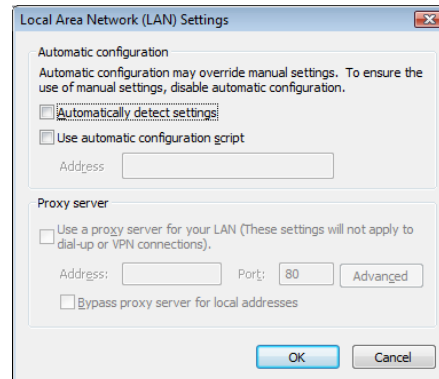
eg. ABC-123-TEF453,  
DE-207-JK122,  
EH-113-DJC56,  
HH-F01R04-WT232,  
QW-101-STM226,  
SC-123-MAC775,  
WH-G27-MS243,

In the example opposite, the room is West House room number G02 and the student CRSID is TW123

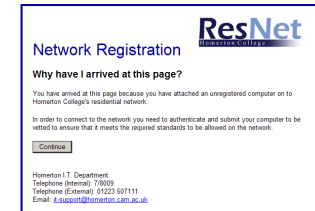


### ResNet - Registration Network

6. Double click **Internet Explorer**, select **Tools, Internet Options, Connections, LAN Settings** please ensure everything is unchecked, Click **OK** and Restart Internet Explorer.



7. Try going to a website you have **not** visited before and you will then be automatically be directed to the page below, Click **Continue** and then **I Accept**



8. At the Registration Form below please fill in **all fields** with your details. The CRSID and password are the Homerton ResNet Account details you received on your Registration day (Not PWF, Hermes, or Raven)

9. Having Clicked Register follow the on screen instructions to complete your connection process. If you require any assistance please contact the I.T. Department on the contact details below.