

Go to <http://iprint.pwf.cam.ac.uk/nipp.exe> and run the iPrint Client installer.



Click **Next**.



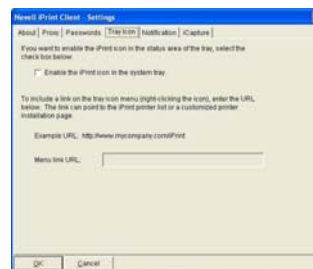
Once completed click **Finish** and restart your Internet Browser.



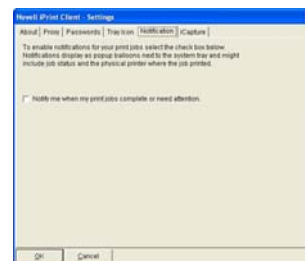
Also once you have successfully installed the iPrint Client you need to make sure that 'Tray Icon' and 'Notification' are switched **OFF** in the client settings. This is due to the fact that these do not work correctly with the PWF print charging software.

To turn these off go to **Start> Programs> Novell iPrint> iPrint Client Settings**

Under Tray Icon make sure that "Enable the iPrint icon in the system tray" is **unticked**



Under Notification make sure that "Notify me when my print jobs complete or need attention" is also **unticked**



Once finished click **OK**

Next go to <http://iprint.pwf.cam.ac.uk/colls/hom.html> to select the PWF printers you want to install. The current PWF printers which are available at Homerton are:

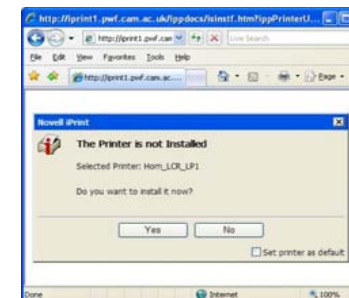
- **Hom_LCR_LP1** - Located in the Lower Computer Room
- **Hom_Lib_LP** - Located on the Ground Floor in the Library

(Please note that these printers are Black & White only)

Click the Printer you wish to install and then login with your PWF account username and password.



Click **Yes** to install. If you want to make this the default printer on your machine make sure the "Set printer as Default" box is ticked in the lower right corner.



Once completed click **OK**



You can now see your newly installed PWF printer under **Start> Settings> Printers and Faxes**

