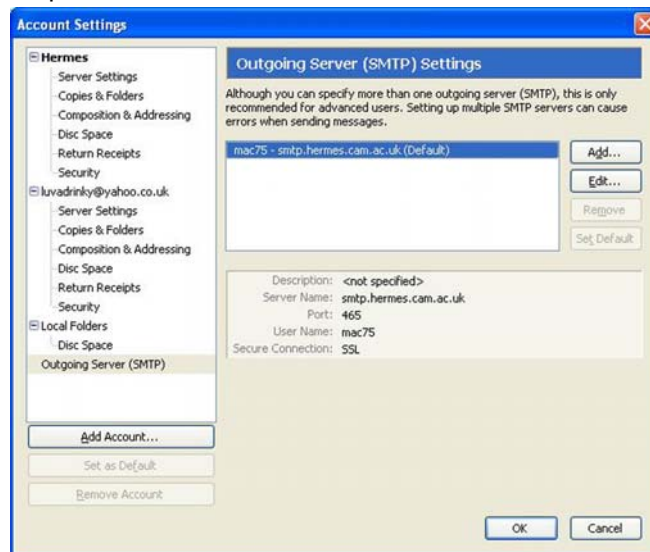


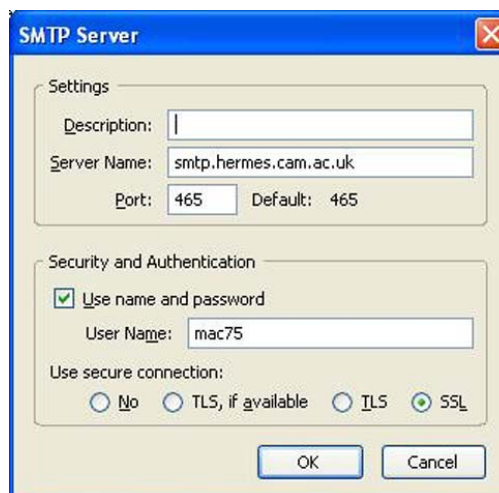
- Adding additional SMTP servers

Go to Tools>Account Settings in Thunderbird

Highlight Outgoing Server in the left hand pane and then click on Add



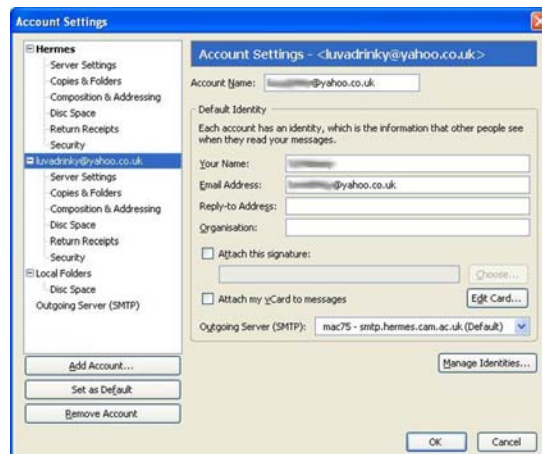
Fill in the details for the SMTP server you wish to add.



Click OK to go back to the Account Settings screen.

Highlight the account you want to use the new SMTP server

Click the drop down arrow next to Outgoing Server (SMTP) and select the server you want that account to use when sending mail.



Click OK and your new SMTP settings have been saved.

