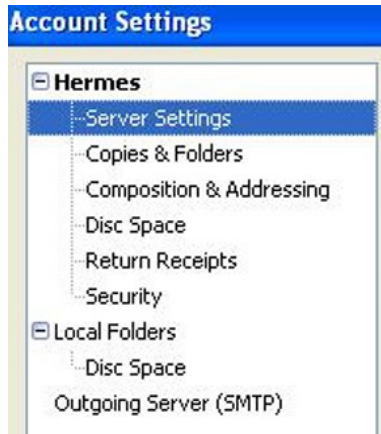


Open up Thunderbird and go to Tools>Account Settings

Click on Server Settings under your Hermes Account in the left hand pane.

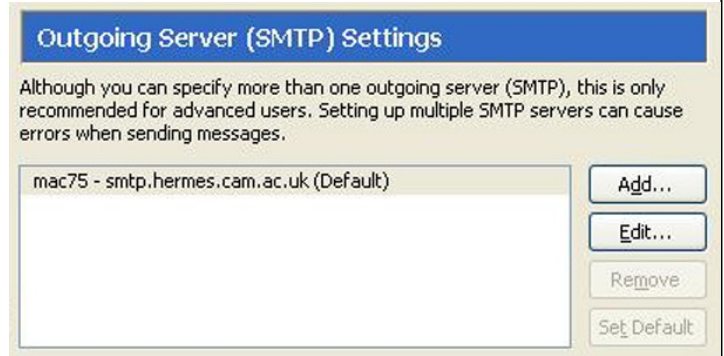


The settings you need for this are as follows:

- Server Name = pop.hermes.cam.ac.uk
- Port = 995
- SSL is selected under "Security Settings"



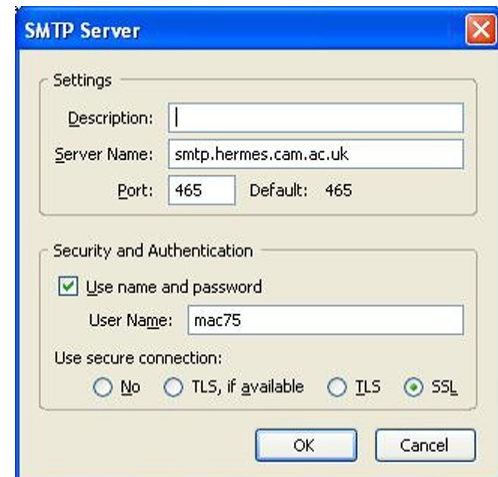
See picture below for screen shot of example settings:  
Next go to Outgoing Server (SMTP) in the left hand pane



Click Edit to edit your Outgoing Mail server settings  
The settings you require for this are as follows:

- Server name = smtp.hermes.cam.ac.uk
- Port = 465
- SSL is selected "under Use secure connection"

See picture below for screen shot of example settings:



Once you have done this click OK to take you back to the main Account Settings screen.

Click OK to save your settings.

Your Thunderbird client is now set up to send/receive your Hermes Email.

Please note that when you send or receive email you will need to enter your Hermes password before the action is com -



Password Request -  
Receiving Mail



Password Request -  
Sending Mail

